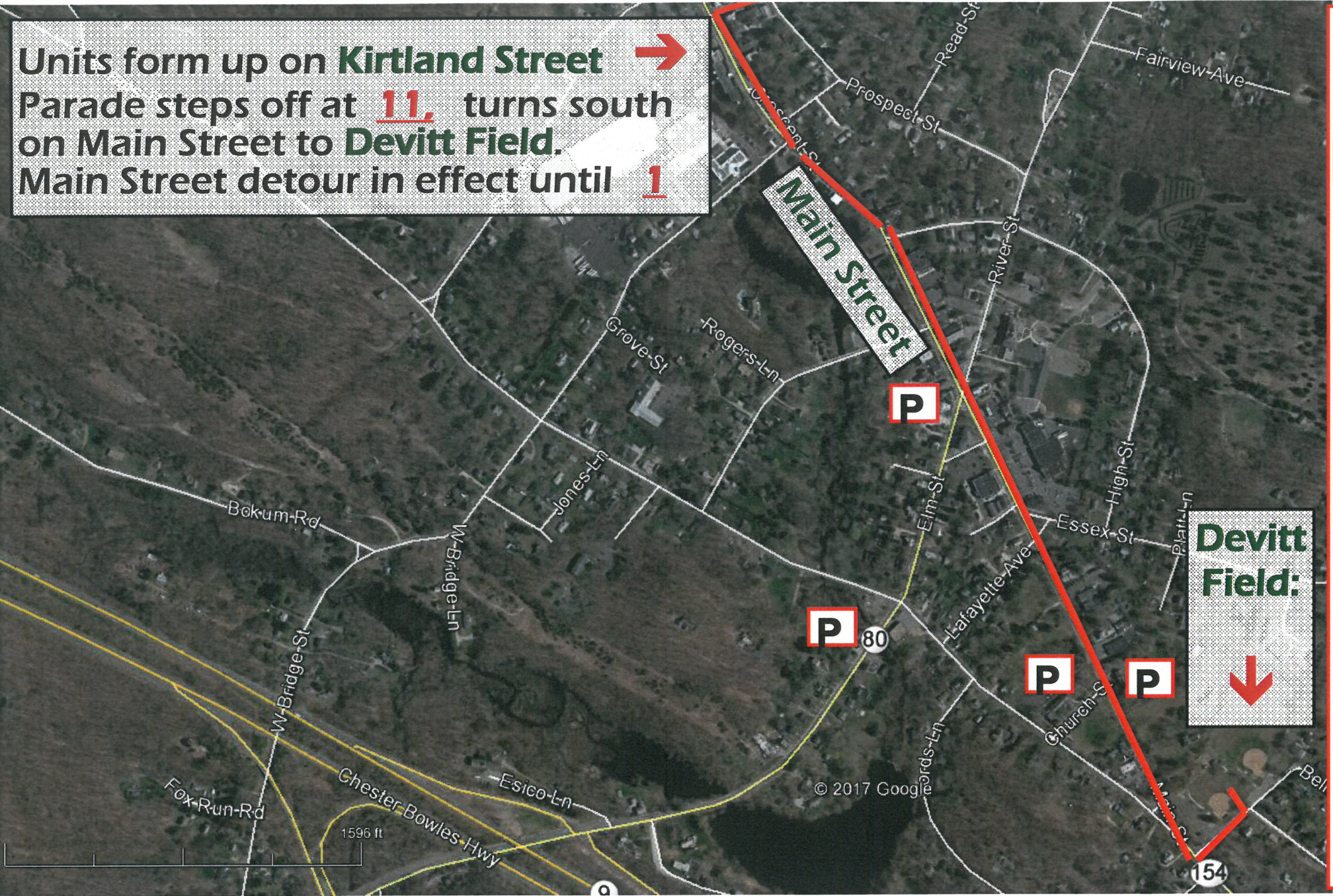


Units form up on **Kirtland Street** →  
Parade steps off at **11**, turns south  
on Main Street to **Devitt Field**.  
Main Street detour in effect until **1**



**ARRIVE EARLY:** aim for 7 o'clock—traffic will be light, and you'll have time to enjoy a leisurely breakfast, chosen from among the excellent establishments along Main Street.

**P** in addition to the larger parking areas shown, driveways and front yards offer entrepreneurial residents the opportunity to provide a valuable service to many hundreds of our Muster guests.

**HEED "NO PARKING" SIGNS:** our narrow, small town streets must be accessible to First Responders. On-street parking, where permitted, is at the village periphery.

**STICK AROUND...RELAX:** enjoy the performances and forego the temptation to depart just as the last unit passes. Why sit in traffic? Stroll our shaded sidewalks, have some more to eat...or rest on a Main Street bench and watch our world go by.

**MISCELLANEOUS TIPS:** if you're running late or must leave at parade's end, use Exit 4 of Route 9, just a mile south of the center of town via Main Street (Route 154). Please follow the directions of our local Officers, Fire Police and Troopers of the CSP. They have countless Musters' traffic experience.

**HANDICAP:** designated spaces at the Congregational Church in addition to those posted in downtown parking lots.

To Route 9, Exit 5 ↓ via West Elm Street (Rt. 80)

To Route 9, Exit 4 ↘ via Main Street (Rt. 154)